

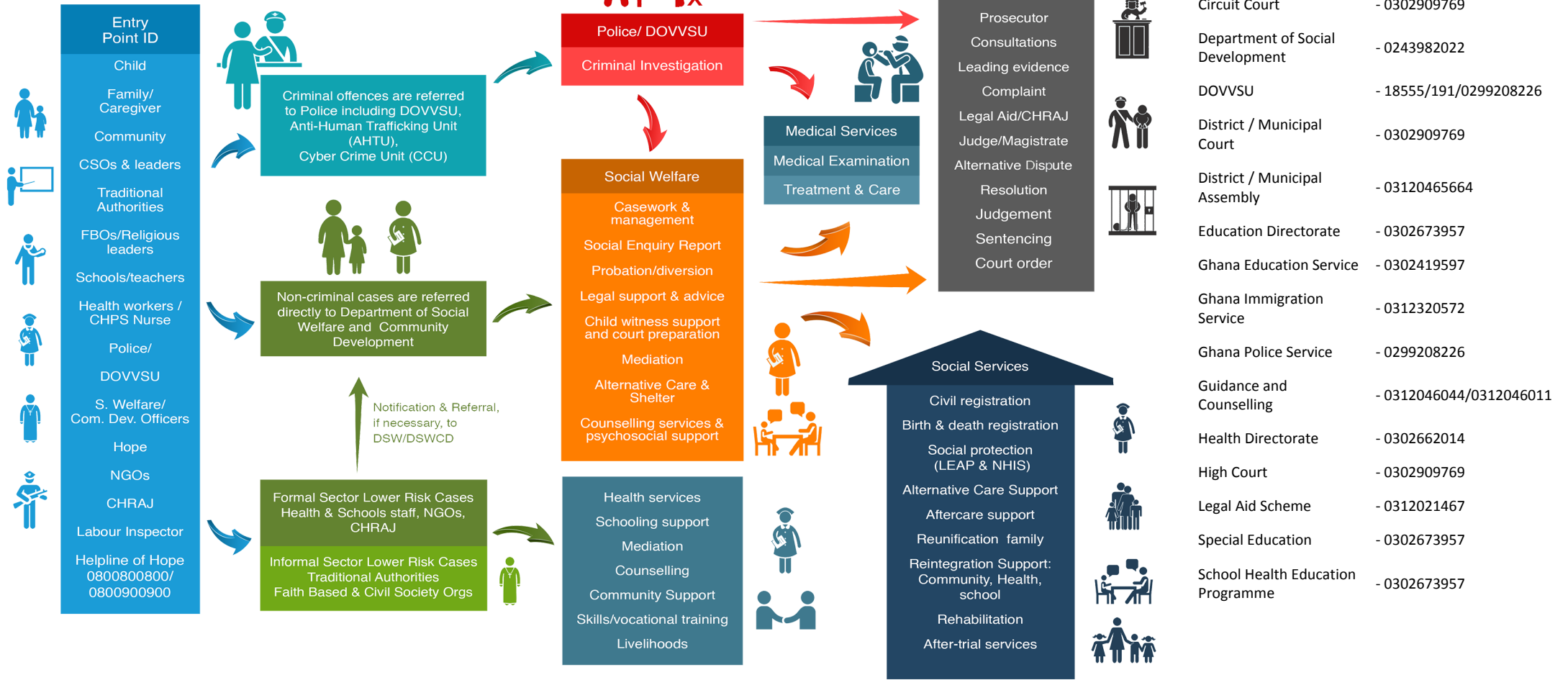


# Referral Pathway - Wassa East District District, Western Region

Child Protection - Sexual And Gender-Based Violence - Social Protection Services



## PATHWAYS FOR REPORTING, RESPONSE AND REFERRALS



- Births and Deaths Registry - 0312046270
- CHRAJ - 0312023730
- Circuit Court - 0302909769
- Department of Social Development - 0243982022
- DOVVSU - 18555/191/0299208226
- District / Municipal Court - 0302909769
- District / Municipal Assembly - 03120465664
- Education Directorate - 0302673957
- Ghana Education Service - 0302419597
- Ghana Immigration Service - 0312320572
- Ghana Police Service - 0299208226
- Guidance and Counselling - 0312046044/0312046011
- Health Directorate - 0302662014
- High Court - 0302909769
- Legal Aid Scheme - 0312021467
- Special Education - 0302673957
- School Health Education Programme - 0302673957

MoGCSP Helpline of Hope - 0800 800 800 or 0900 800 800; MoGCSP Directory of Services - www.directory.mogcsp.gov.gh; GPS DOVVSU Domestic Violence Helpline - 05 5100 0900; National Cyber Security Online Abuse Helpline - 292; GPS Counter Trafficking Helpline - 18555/191

