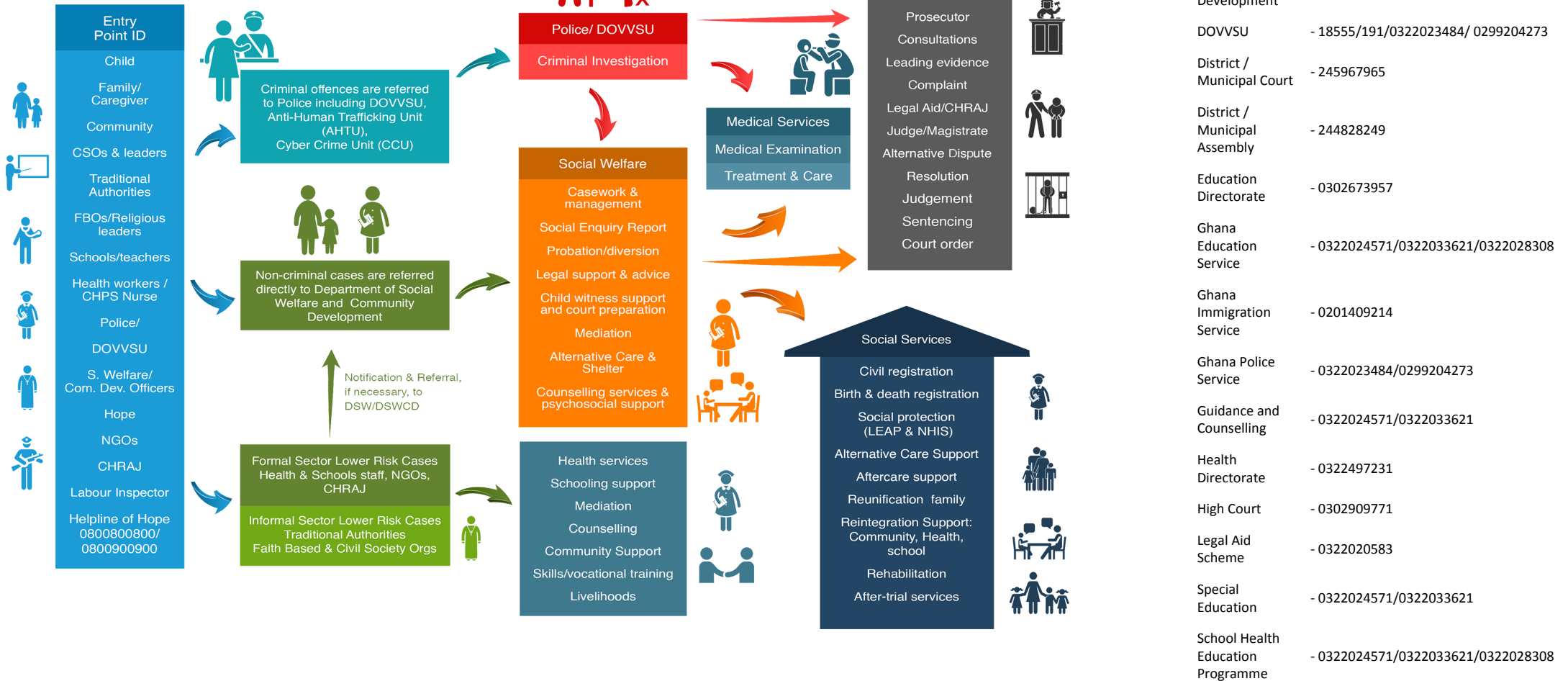


## PATHWAYS FOR REPORTING, RESPONSE AND REFERRALS



- Births and Deaths Registry - 0322024036
- CHRAJ - 0322027445
- Circuit Court - 0302909771
- Department of Social Development - 0243819698
- DOVVSU - 18555/191/0322023484/ 0299204273
- District / Municipal Court - 245967965
- District / Municipal Assembly - 244828249
- Education Directorate - 0302673957
- Ghana Education Service - 0322024571/0322033621/0322028308
- Ghana Immigration Service - 0201409214
- Ghana Police Service - 0322023484/0299204273
- Guidance and Counselling - 0322024571/0322033621
- Health Directorate - 0322497231
- High Court - 0302909771
- Legal Aid Scheme - 0322020583
- Special Education - 0322024571/0322033621
- School Health Education Programme - 0322024571/0322033621/0322028308