

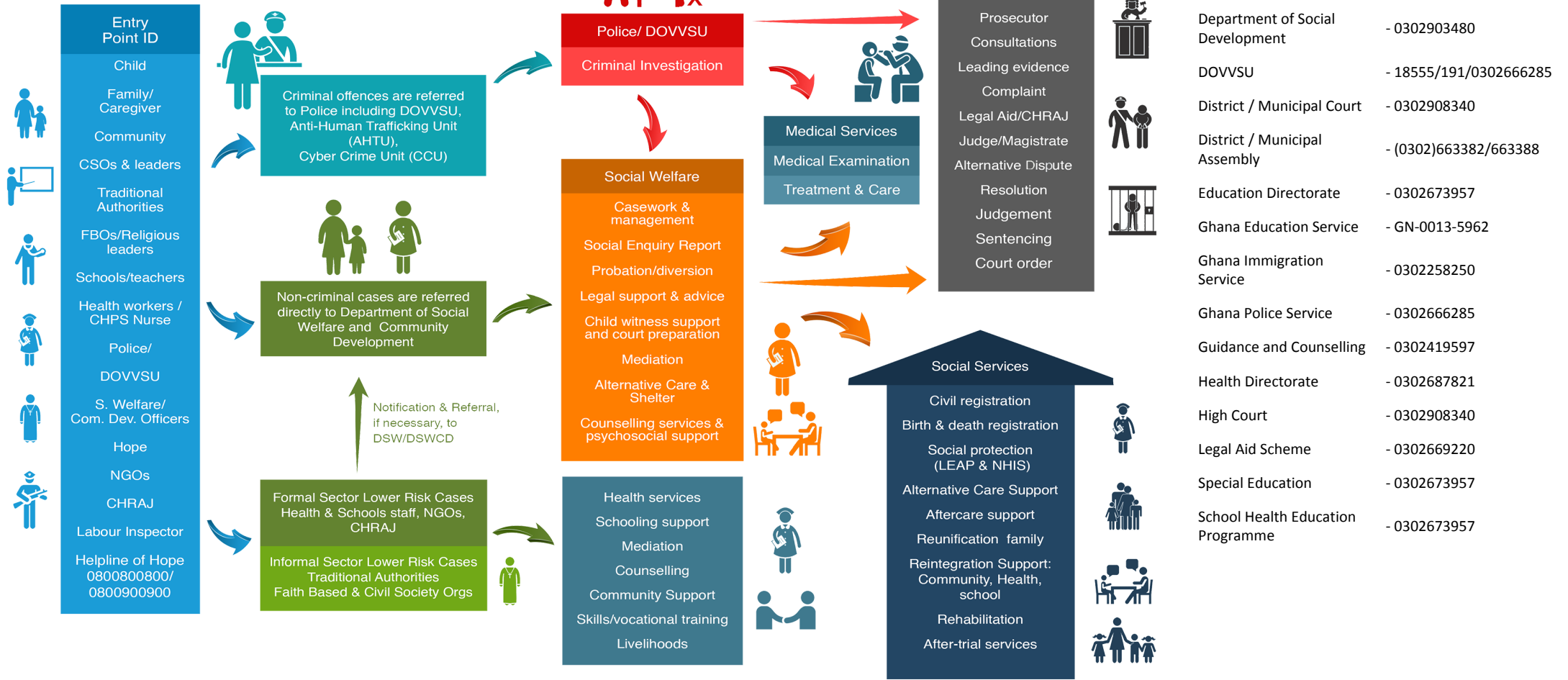


Referral Pathway - Ningo Prampram District District, Greater Accra Region

Child Protection - Sexual And Gender-Based Violence - Social Protection Services



PATHWAYS FOR REPORTING, RESPONSE AND REFERRALS



- Births and Deaths Registry - 0507771097
- CHRAJ - 0302227111
- Circuit Court - 0302908340
- Department of Social Development - 0302903480
- DOVVSU - 18555/191/0302666285
- District / Municipal Court - 0302908340
- District / Municipal Assembly - (0302)663382/663388
- Education Directorate - 0302673957
- Ghana Education Service - GN-0013-5962
- Ghana Immigration Service - 0302258250
- Ghana Police Service - 0302666285
- Guidance and Counselling - 0302419597
- Health Directorate - 0302687821
- High Court - 0302908340
- Legal Aid Scheme - 0302669220
- Special Education - 0302673957
- School Health Education Programme - 0302673957

