

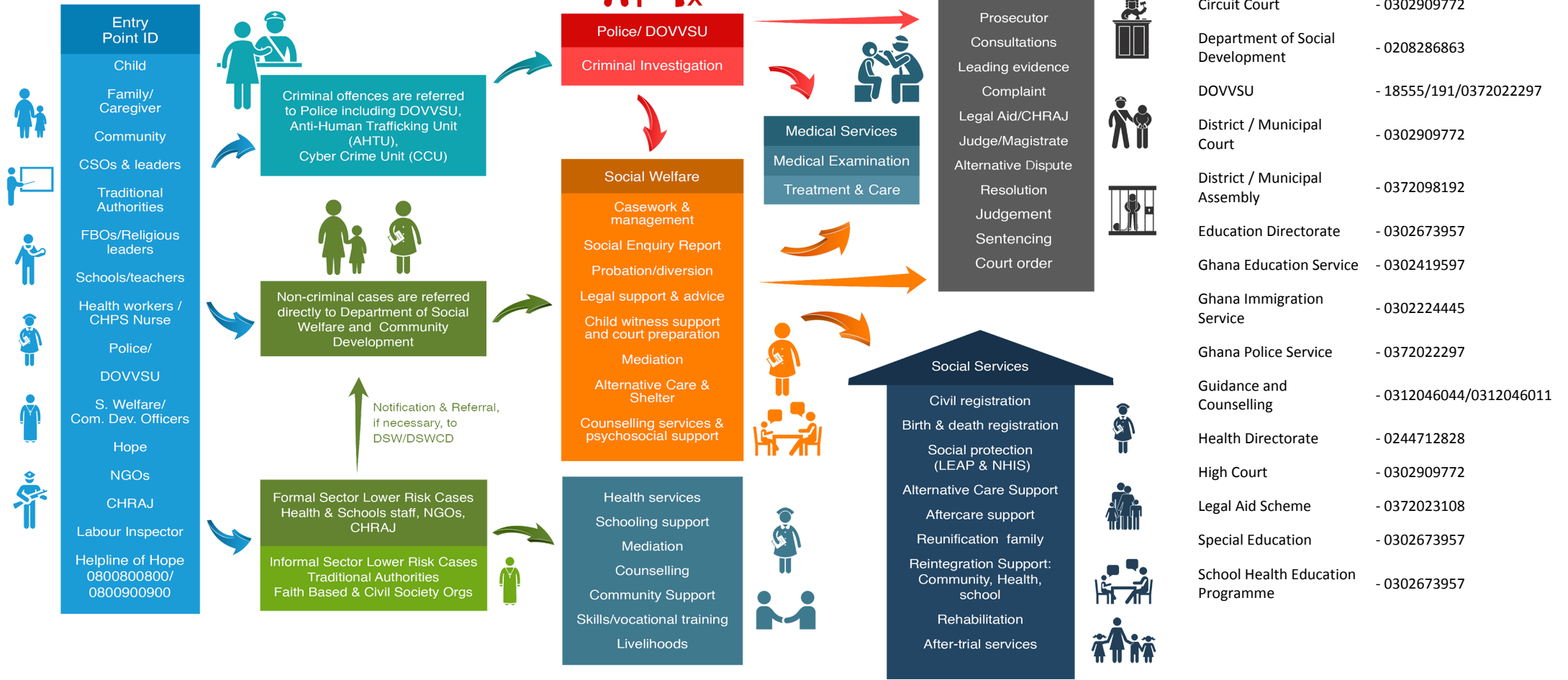


Referral Pathway - Mamprugu Moagduri District District, North East Region

Child Protection - Sexual And Gender-Based Violence - Social Protection Services



PATHWAYS FOR REPORTING, RESPONSE AND REFERRALS



- Births and Deaths Registry - 0372024406
- CHRAJ - 0507177414
- Circuit Court - 0302909772
- Department of Social Development - 0208286863
- DOVVSU - 18555/191/0372022297
- District / Municipal Court - 0302909772
- District / Municipal Assembly - 0372098192
- Education Directorate - 0302673957
- Ghana Education Service - 0302419597
- Ghana Immigration Service - 0302224445
- Ghana Police Service - 0372022297
- Guidance and Counselling - 0312046044/0312046011
- Health Directorate - 0244712828
- High Court - 0302909772
- Legal Aid Scheme - 0372023108
- Special Education - 0302673957
- School Health Education Programme - 0302673957

MoGCSP Helpline of Hope - 0800 800 800 or 0900 800 800; MoGCSP Directory of Services - www.directory.mogcsp.gov.gh; GPS DOVVSU Domestic Violence Helpline - 05 5100 0900; National Cyber Security Online Abuse Helpline - 292; GPS Counter Trafficking Helpline - 18555/191

