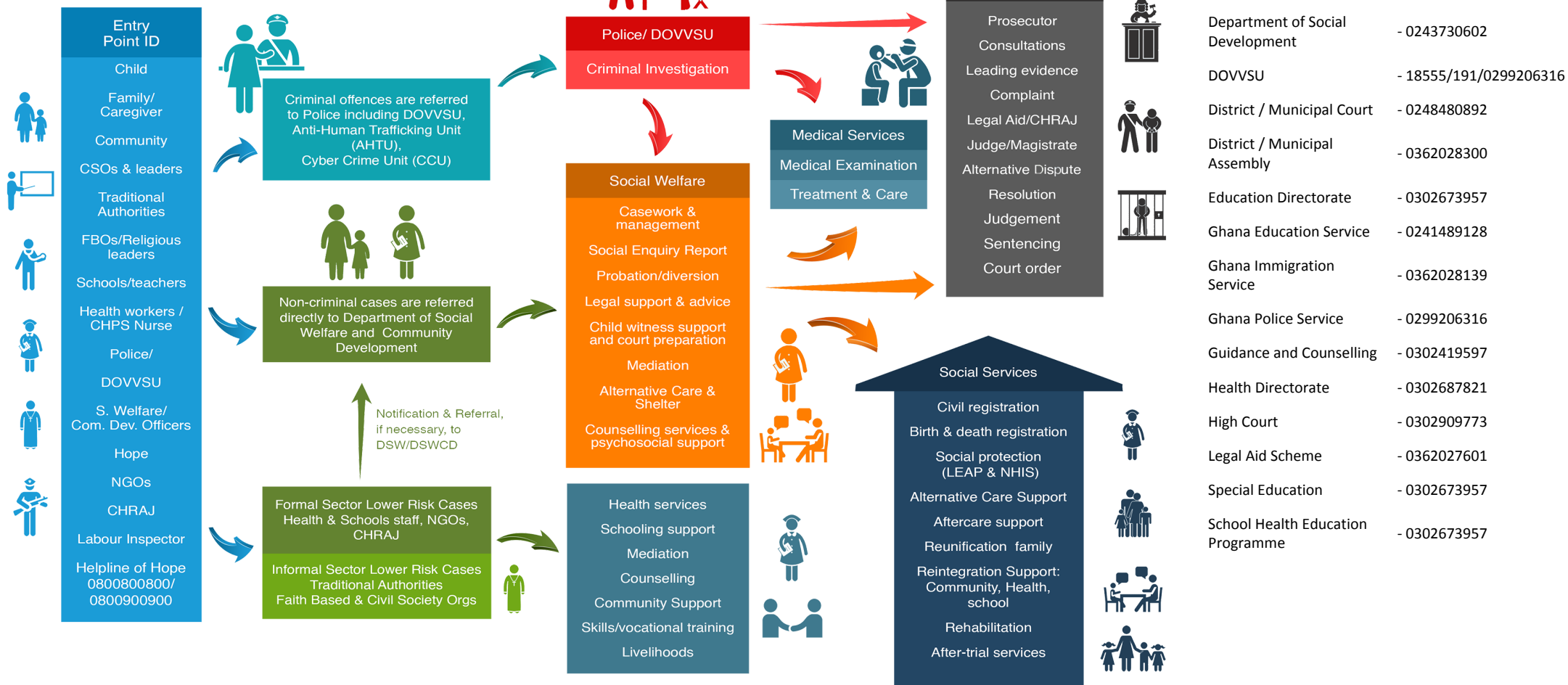


PATHWAYS FOR REPORTING, RESPONSE AND REFERRALS



- Births and Deaths Registry - 0362026355
- CHRAJ - 0362026797
- Circuit Court - 0302909773
- Department of Social Development - 0243730602
- DOVVSU - 18555/191/0299206316
- District / Municipal Court - 0248480892
- District / Municipal Assembly - 0362028300
- Education Directorate - 0302673957
- Ghana Education Service - 0241489128
- Ghana Immigration Service - 0362028139
- Ghana Police Service - 0299206316
- Guidance and Counselling - 0302419597
- Health Directorate - 0302687821
- High Court - 0302909773
- Legal Aid Scheme - 0362027601
- Special Education - 0302673957
- School Health Education Programme - 0302673957