

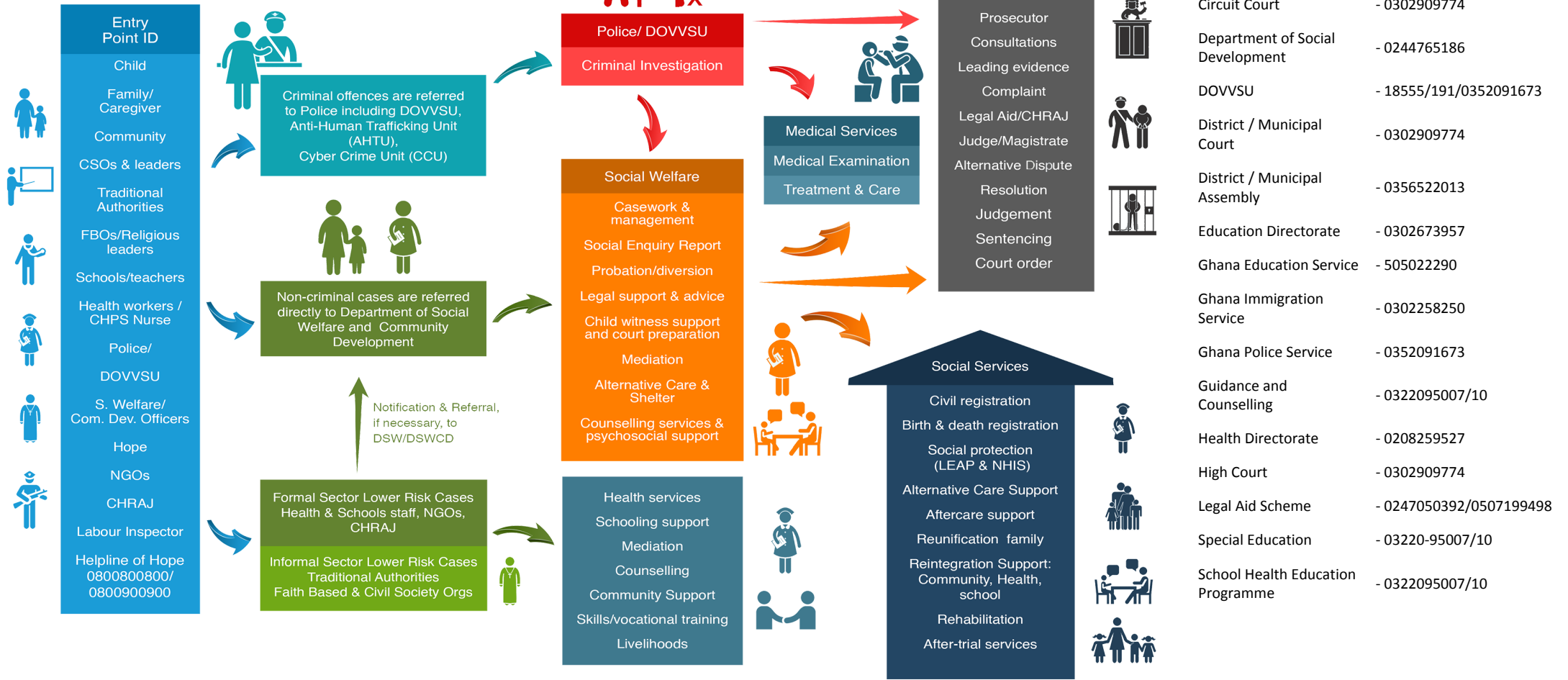


# Referral Pathway - Kintampo North Municipal District District, Bono East Region



Child Protection - Sexual And Gender-Based Violence - Social Protection Services

## PATHWAYS FOR REPORTING, RESPONSE AND REFERRALS



- Births and Deaths Registry - 0352023337
- CHRAJ - 0242211534
- Circuit Court - 0302909774
- Department of Social Development - 0244765186
- DOVVSU - 18555/191/0352091673
- District / Municipal Court - 0302909774
- District / Municipal Assembly - 0356522013
- Education Directorate - 0302673957
- Ghana Education Service - 505022290
- Ghana Immigration Service - 0302258250
- Ghana Police Service - 0352091673
- Guidance and Counselling - 0322095007/10
- Health Directorate - 0208259527
- High Court - 0302909774
- Legal Aid Scheme - 0247050392/0507199498
- Special Education - 03220-95007/10
- School Health Education Programme - 0322095007/10

MoGCSP Helpline of Hope - 0800 800 800 or 0900 800 800; MoGCSP Directory of Services - www.directory.mogcsp.gov.gh; GPS DOVVSU Domestic Violence Helpline - 05 5100 0900; National Cyber Security Online Abuse Helpline - 292; GPS Counter Trafficking Helpline - 18555/191

