

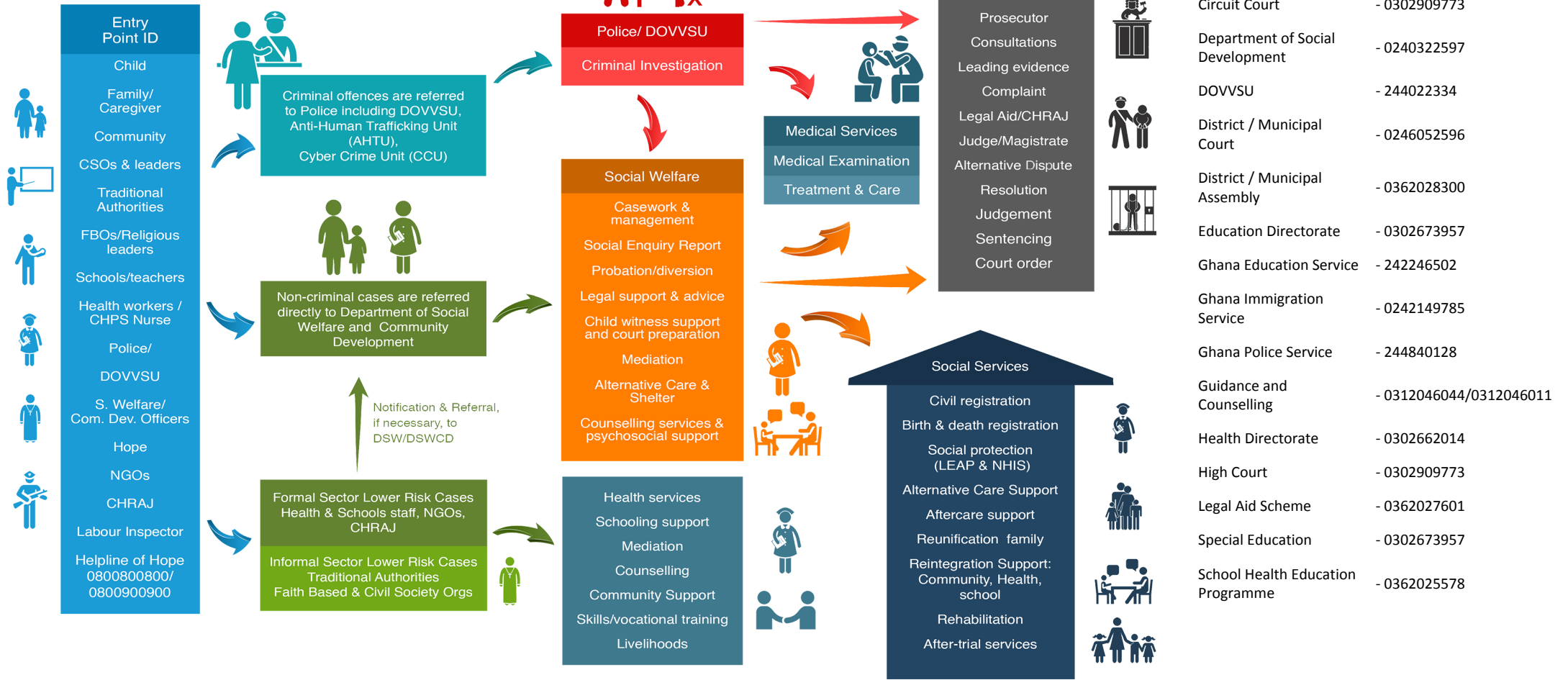


# Referral Pathway - Ketu South Municipal District District, Volta Region



Child Protection - Sexual And Gender-Based Violence - Social Protection Services

## PATHWAYS FOR REPORTING, RESPONSE AND REFERRALS



MoGCSP Helpline of Hope - 0800 800 800 or 0900 800 800; MoGCSP Directory of Services - [www.directory.mogcsp.gov.gh](http://www.directory.mogcsp.gov.gh); GPS DOVVSU Domestic Violence Helpline - 05 5100 0900; National Cyber Security Online Abuse Helpline - 292; GPS Counter Trafficking Helpline - 18555/191

