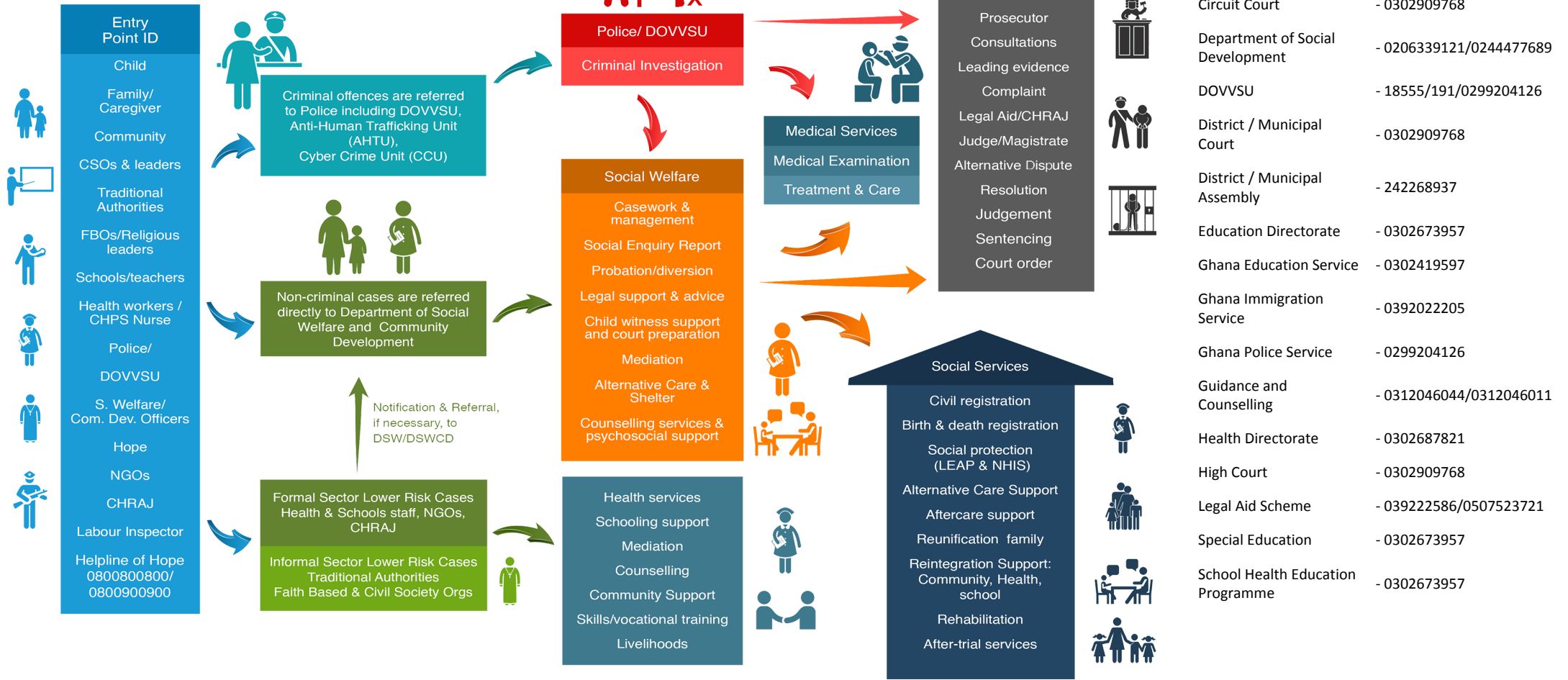


## PATHWAYS FOR REPORTING, RESPONSE AND REFERRALS



- Births and Deaths Registry - 0392022280
- CHRAJ - 0392022393
- Circuit Court - 0302909768
- Department of Social Development - 0206339121/0244477689
- DOVVSU - 18555/191/0299204126
- District / Municipal Court - 0302909768
- District / Municipal Assembly - 242268937
- Education Directorate - 0302673957
- Ghana Education Service - 0302419597
- Ghana Immigration Service - 0392022205
- Ghana Police Service - 0299204126
- Guidance and Counselling - 0312046044/0312046011
- Health Directorate - 0302687821
- High Court - 0302909768
- Legal Aid Scheme - 039222586/0507523721
- Special Education - 0302673957
- School Health Education Programme - 0302673957