

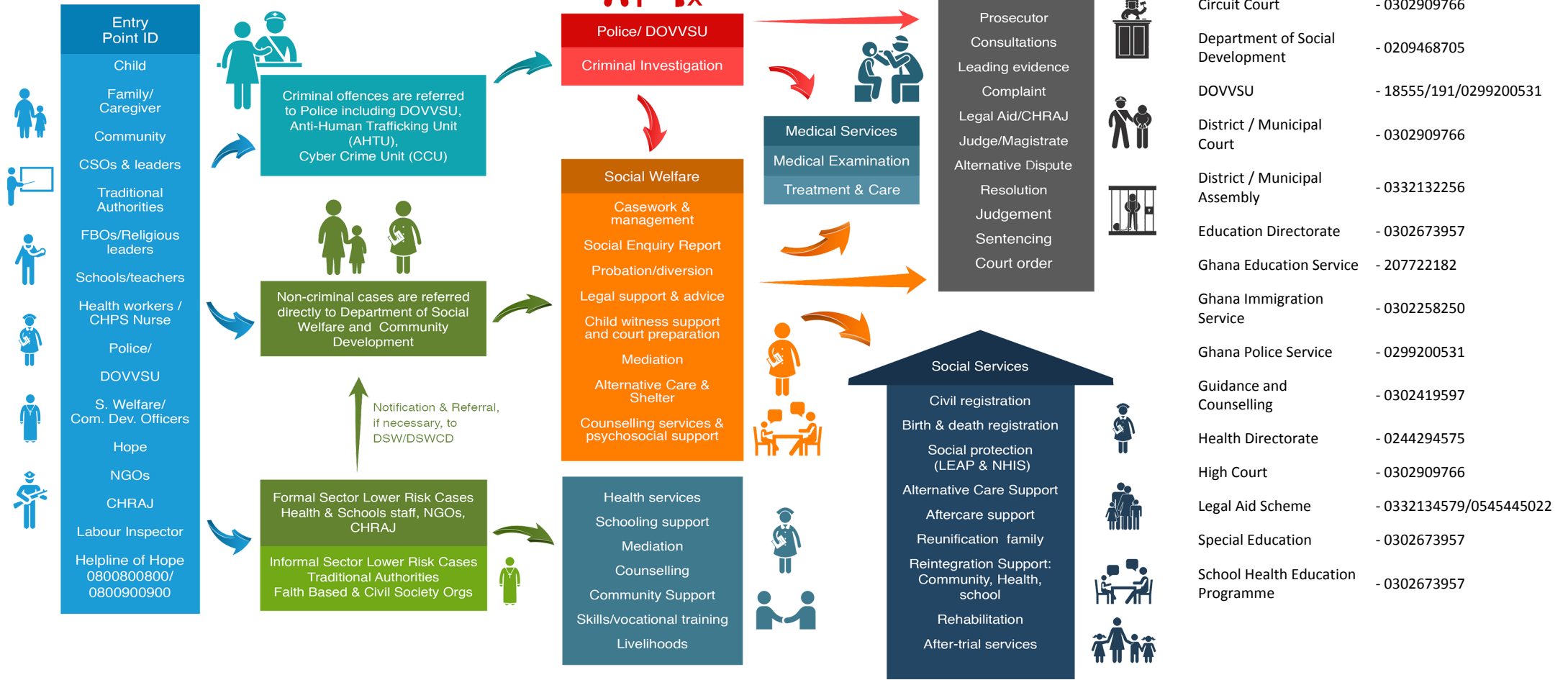


Referral Pathway - Gomoa West District District, Central Region



Child Protection - Sexual And Gender-Based Violence - Social Protection Services

PATHWAYS FOR REPORTING, RESPONSE AND REFERRALS



- Births and Deaths Registry - 0332132704/0332132195
- CHRAJ - 0332032280/3158
- Circuit Court - 0302909766
- Department of Social Development - 0209468705
- DOVVSU - 18555/191/0299200531
- District / Municipal Court - 0302909766
- District / Municipal Assembly - 0332132256
- Education Directorate - 0302673957
- Ghana Education Service - 207722182
- Ghana Immigration Service - 0302258250
- Ghana Police Service - 0299200531
- Guidance and Counselling - 0302419597
- Health Directorate - 0244294575
- High Court - 0302909766
- Legal Aid Scheme - 0332134579/0545445022
- Special Education - 0302673957
- School Health Education Programme - 0302673957

MoGCSP Helpline of Hope - 0800 800 800 or 0900 800 800; MoGCSP Directory of Services - www.directory.mogcsp.gov.gh; GPS DOVVSU Domestic Violence Helpline - 05 5100 0900; National Cyber Security Online Abuse Helpline - 292; GPS Counter Trafficking Helpline - 18555/191

