

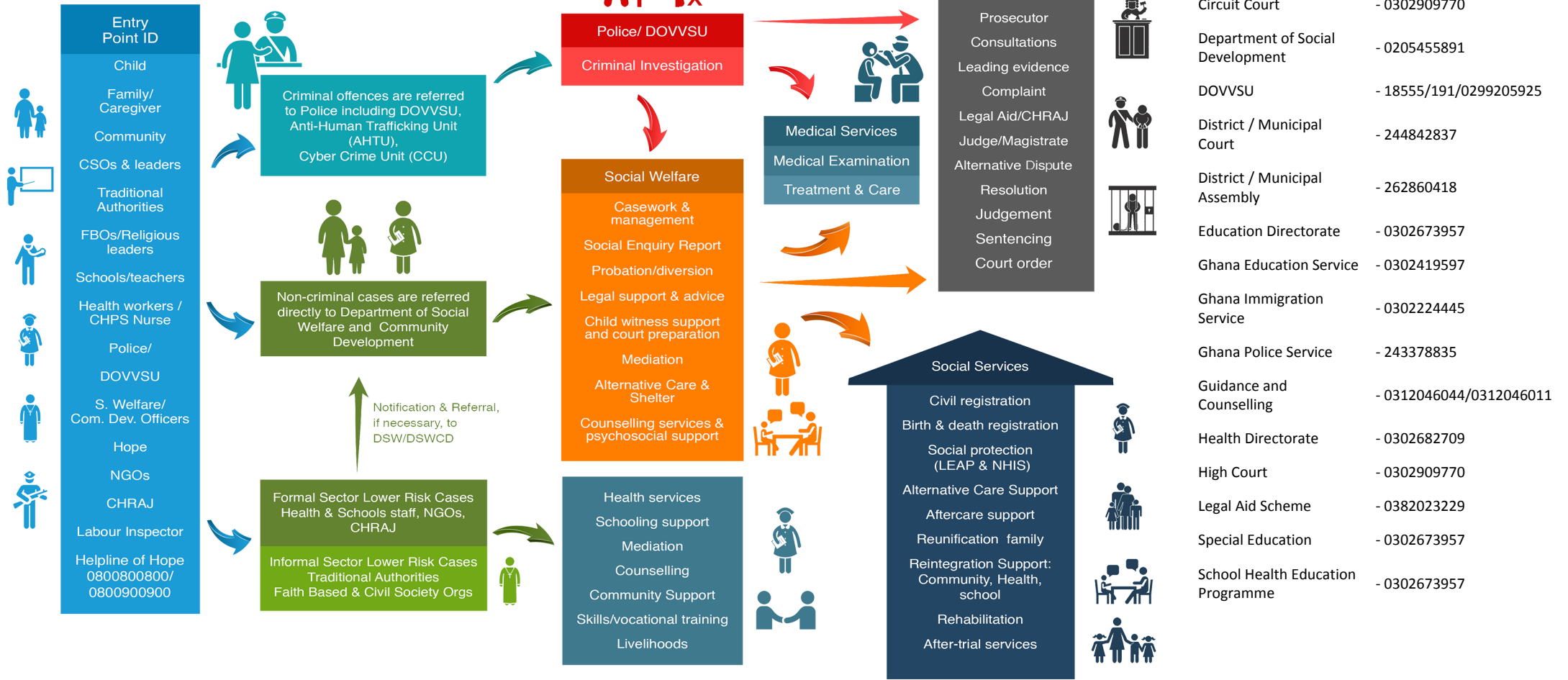


# Referral Pathway - Bolgatanga Municipal District, Upper East Region



Child Protection - Sexual And Gender-Based Violence - Social Protection Services

## PATHWAYS FOR REPORTING, RESPONSE AND REFERRALS



- Births and Deaths Registry - 0382022035/0382023181
- CHRAJ - 0382022312
- Circuit Court - 0302909770
- Department of Social Development - 0205455891
- DOVVSU - 18555/191/0299205925
- District / Municipal Court - 244842837
- District / Municipal Assembly - 262860418
- Education Directorate - 0302673957
- Ghana Education Service - 0302419597
- Ghana Immigration Service - 0302224445
- Ghana Police Service - 243378835
- Guidance and Counselling - 0312046044/0312046011
- Health Directorate - 0302682709
- High Court - 0302909770
- Legal Aid Scheme - 0382023229
- Special Education - 0302673957
- School Health Education Programme - 0302673957

MoGCSP Helpline of Hope - 0800 800 800 or 0900 800 800; MoGCSP Directory of Services - www.directory.mogcsp.gov.gh; GPS DOVVSU Domestic Violence Helpline - 05 5100 0900; National Cyber Security Online Abuse Helpline - 292; GPS Counter Trafficking Helpline - 18555/191

