

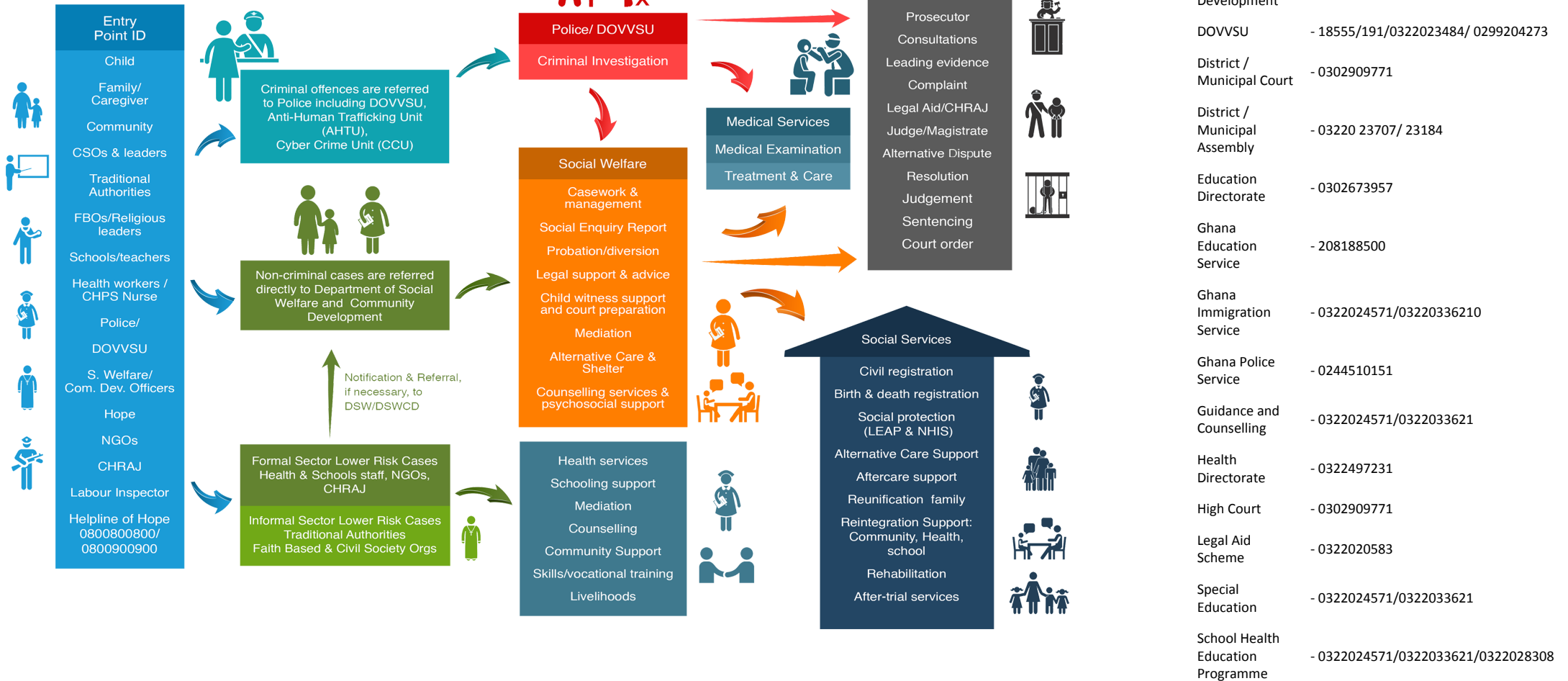


Referral Pathway - Atwima North Nwabiagya District, Ashanti Region

Child Protection - Sexual And Gender-Based Violence - Social Protection Services



PATHWAYS FOR REPORTING, RESPONSE AND REFERRALS



- Births and Deaths Registry - 0322024036
- CHRAJ - 0322027445
- Circuit Court - 201347838
- Department of Social Development - 0243819698
- DOVVSU - 18555/191/0322023484/ 0299204273
- District / Municipal Court - 0302909771
- District / Municipal Assembly - 03220 23707/ 23184
- Education Directorate - 0302673957
- Ghana Education Service - 208188500
- Ghana Immigration Service - 0322024571/03220336210
- Ghana Police Service - 0244510151
- Guidance and Counselling - 0322024571/0322033621
- Health Directorate - 0322497231
- High Court - 0302909771
- Legal Aid Scheme - 0322020583
- Special Education - 0322024571/0322033621
- School Health Education Programme - 0322024571/0322033621/0322028308

MoGCSP Helpline of Hope - 0800 800 800 or 0900 800 800; MoGCSP Directory of Services - www.directory.mogcsp.gov.gh; GPS DOVVSU Domestic Violence Helpline - 05 5100 0900; National Cyber Security Online Abuse Helpline - 292; GPS Counter Trafficking Helpline - 18555/191

